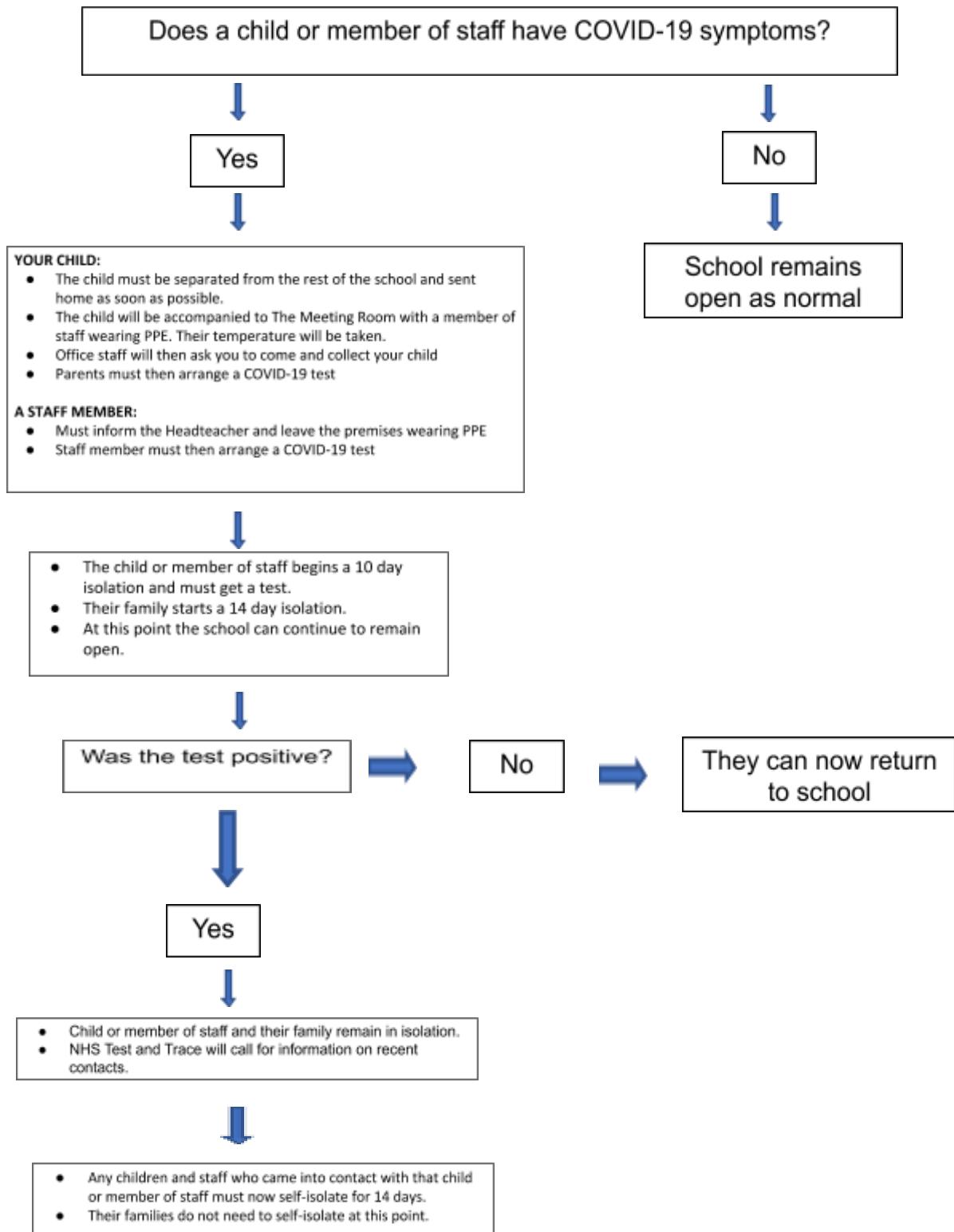


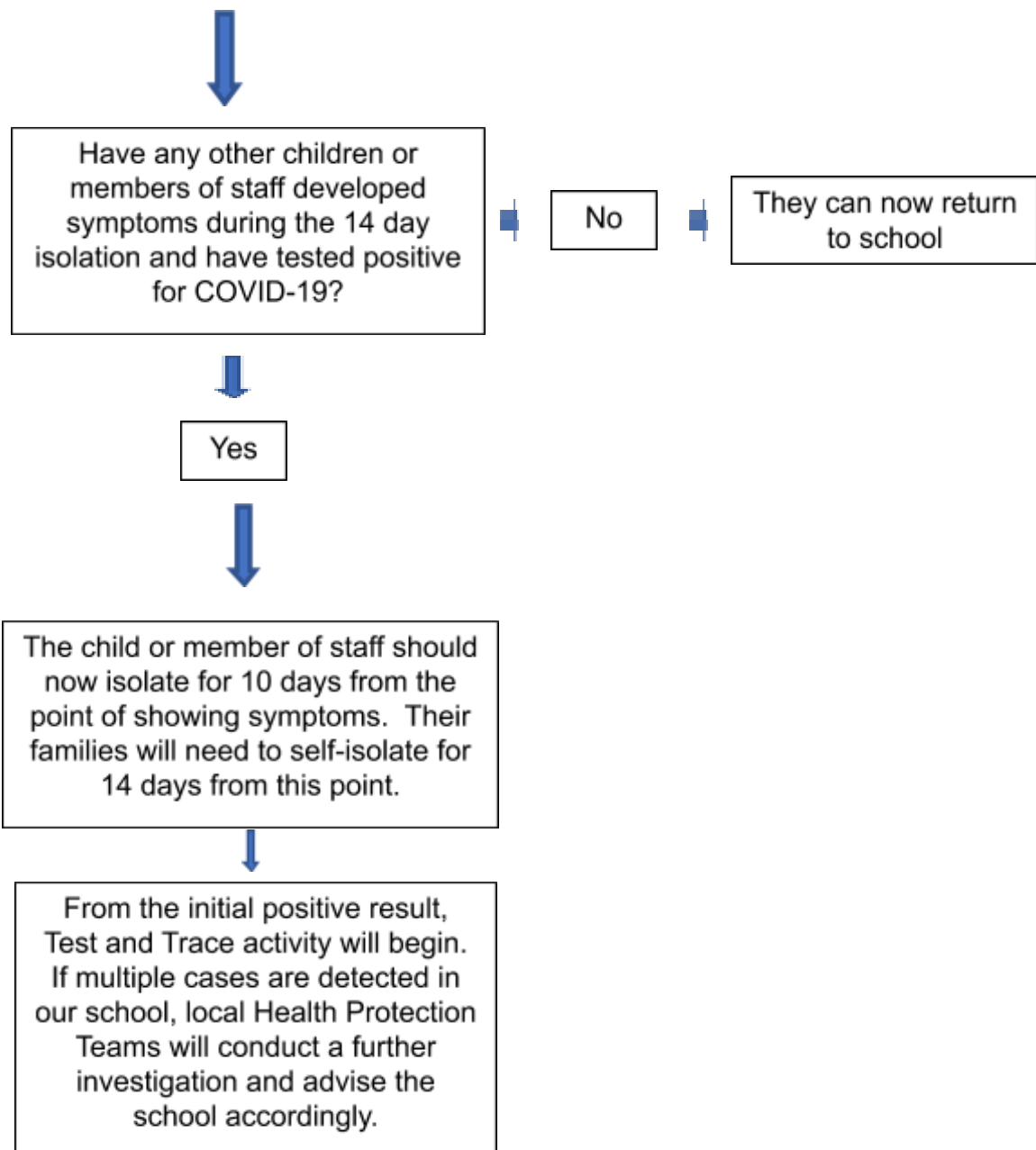


Protocol for Suspected Covid-19 Case/s in School – Parent/Carer Version

(Latest Version: 19th August 2020)

This diagram shows how we will advise individuals (children and adults) and their households if they become unwell OR if they are sent home because they have been in contact with someone who is ill.





Main Symptoms

The main symptoms of coronavirus are:

- **a high temperature** – this means you feel hot to touch on your chest or back (you do not need to measure your temperature)
- **a new, continuous cough** – this means coughing a lot for more than an hour, or 3 or more coughing episodes in 24 hours (if you usually have a cough, it may be worse than usual)
- **a loss or change to your sense of smell or taste** – this means you've noticed you cannot smell or taste anything, or things smell or taste different to normal

The majority of people with coronavirus have at least 1 of these symptoms.

What to do if you have symptoms:

If you have any of the main symptoms of coronavirus:

1. Get a test to check if you have coronavirus as soon as possible.
2. Stay at home and do not have visitors until you get your test result – only leave your home to have a test.

Anyone you live with, and anyone in your support bubble, must also stay at home until you get your result.

NHS Test and Trace

The NHS Test and Trace service will help to control the rate of reproduction (R), reduce the spread of the infection and save lives. By playing your part through the actions set out below, you will directly help to contain the virus by reducing its spread. This means that, thanks to your efforts, the Government will be able to go as far as it is safe to go in easing lockdown measures.

You can help in the following ways:

- if you develop symptoms, you must continue to follow the rules to self-isolate with other members of your household and get a test to find out if you have coronavirus
- if you test positive for coronavirus, you must share information promptly about your recent contacts through the NHS Test and Trace service to help them alert other people who may need to self-isolate
- if you have had close recent contact with someone who has coronavirus, you must self-isolate if the NHS Test and Trace service advises you to do so

Definitions

‘Self-isolation if you have symptoms’ means you and all household members must remain at home. Do not go outside your home for any reason i.e. to work, school, or public areas, and do not use public transport or taxis. The [guidance for households with possible coronavirus infection page](#) has more information on self-isolation.

‘Contact’ means a person who has been in close contact with someone who has tested positive for coronavirus and who may or may not live with them.