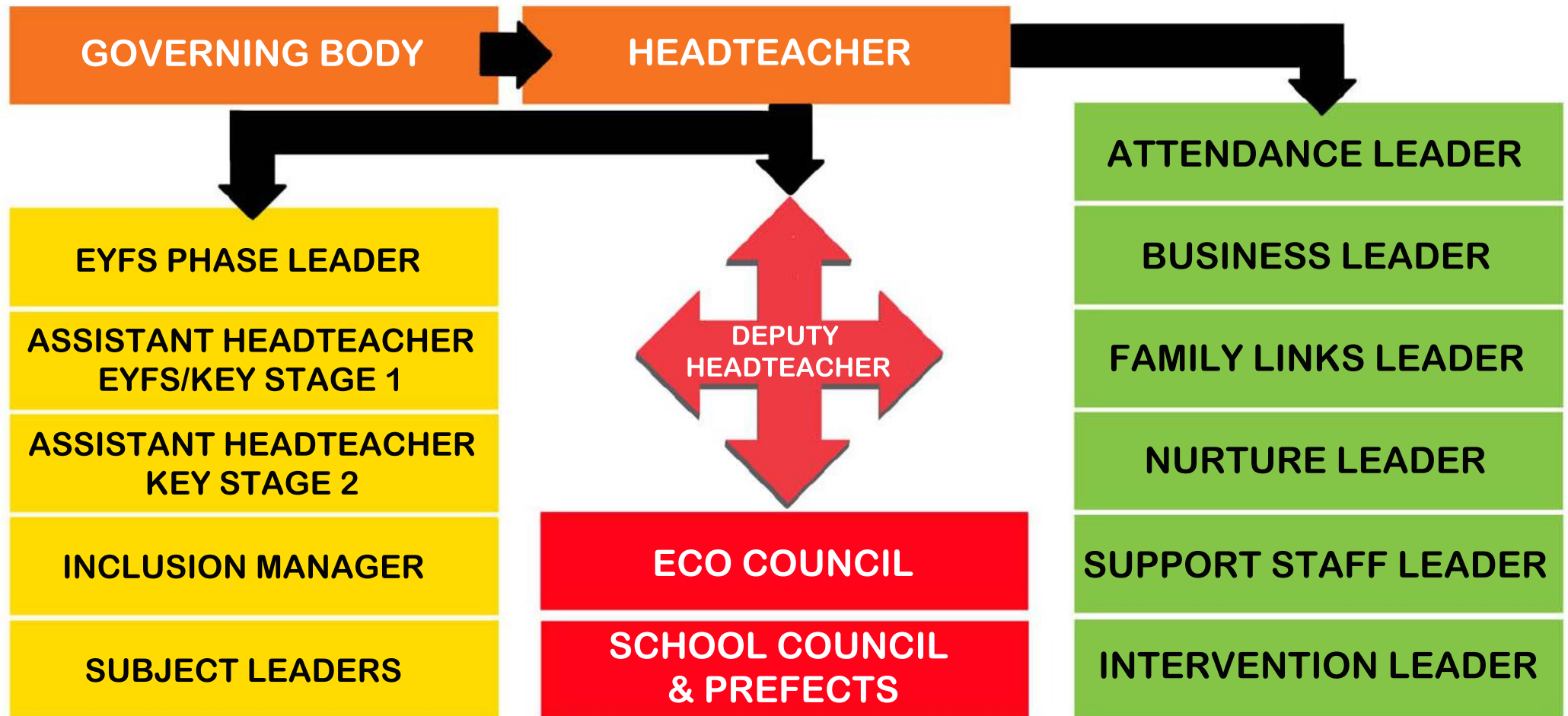




OUTSTANDING LEADERSHIP STRUCTURE

Denbigh Primary School prides itself on being a collaborative and inclusive school. As a core purpose, collaborative and inclusion is at the heart of everything our school does, in an environment where everyone is valued, included and proud to achieve. This ethos is filtrated through the Leadership Team



What has developed? - Strong support from the Leadership team to implement vision and manage change. A leadership Team committed to professional development of staff. Greater internal and external collaboration which promotes sharing good practice. Excellent relationships within school and with our school community. Shared ownership. Recognizing and developing skills in others. Close collaboration to ensure actions support school priorities. Perseverance and some non-negotiable to drive school improvement. Quality monitoring systems which have encouraged reflective practice and driven improvements.